



MONTHLY MEMBERSHIP PROGRESS REPORT

District 3231A1

Results as of: 03/31/2019

GMT: JAYESH THAKKAR

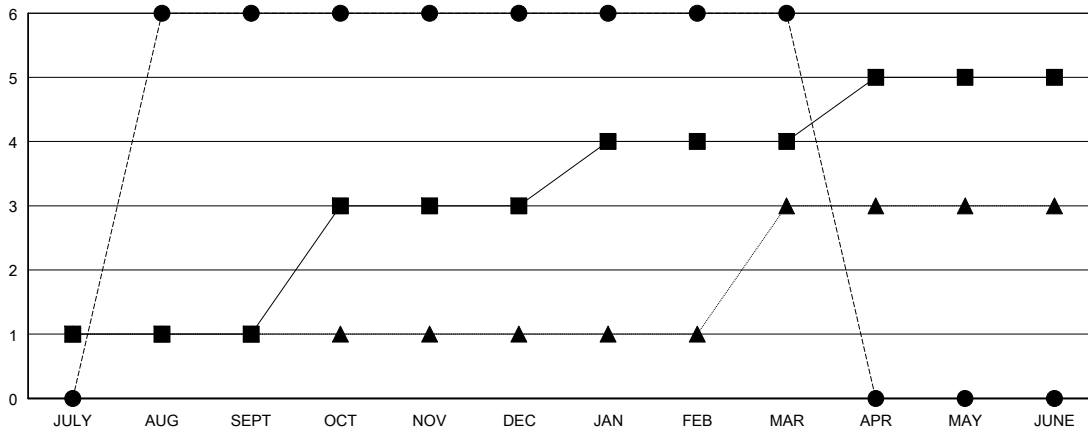
LOCATION INDIA

GMT CA

Clubs			
RESULTS FOR 2018-2019			
QUARTER	NEW CLUB GOAL	NEW CLUBS	DROPPED CLUBS
JULY/AUG/SEPT	1	6	1
OCT/NOV/DEC	2	0	2
JAN/FEB/MAR	1	0	1
APR/MAY/JUNE	1	0	0

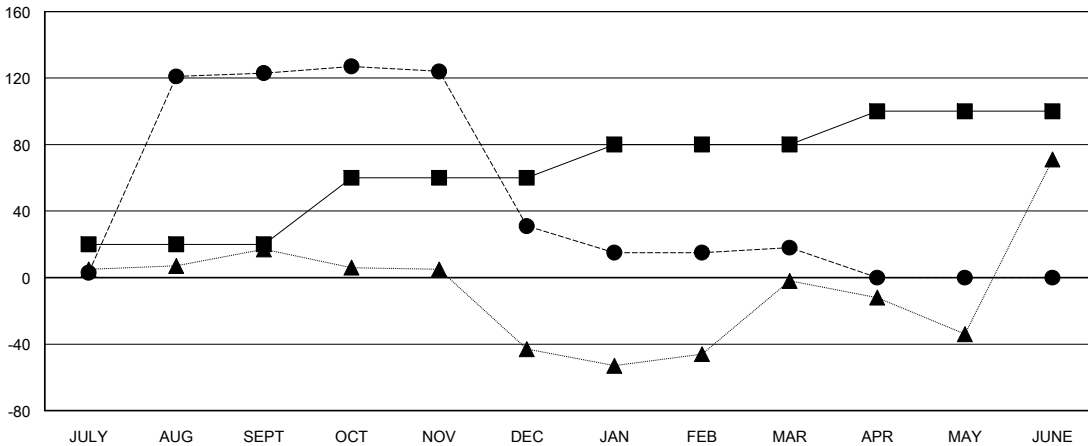
Members			
RESULTS FOR 2018-2019			
QUARTER	MEMBER GROWTH NET GOAL	MEMBER GROWTH ACTUAL	DROPPED MEMBERS ACTUAL (including transfers)
JULY/AUG/SEPT	20	154	25
OCT/NOV/DEC	40	8	99
JAN/FEB/MAR	20	10	21
APR/MAY/JUNE	20	0	0

GOALS AND ACTUAL NEW CLUBS CUMULATIVE



- - CURRENT YEAR GOALS FOR NEW CLUBS
- - CURRENT YEAR ACTUAL NEW CLUBS
- ▲ - LAST YEAR ACTUAL NEW CLUBS

GOALS AND ACTUAL MEMBERS CUMULATIVE



- - MEMBER GROWTH NET GOAL
- - MEMBER GROWTH ACTUAL
- ▲ - LAST YEAR MEMBERSHIP ACTUAL

DROPPED CLUBS: 4

22 CLUBS OF 61 ADDED 1 OR MORE NEW MEMBERS

GENDER DISTRIBUTION	
MALE	1,174 (60.67%)
FEMALE	761 (39.33%)
Women Percentage Fiscal Year Goal: 39%	

DROPPED MEMBERS	
DECEASED	15
CLUB CANCELLED	57
OTHER	73
TOTAL	145

[CLICK HERE FOR CUMULATIVE MEMBERSHIP DATA](#)

TOTAL FAMILY UNIT MEMBERS	951
FAMILY MEMBERS PAYING HALF DUES	536